

# COUNTY OFFICES

## *Southern California*

RECORDER • COUNTY CLERK • TAX COLLECTOR  
ASSESSOR • TREASURER



### LOS ANGELES COUNTY

#### County of Los Angeles Registrar-Recorder/County Clerk (Main Office)

12400 Imperial Hwy., Rm. 2001,  
Norwalk 90650  
Phone: (562) 462-2125  
Website: <http://lavote.net> or  
<http://rrcc.lacounty.gov>

#### *LA County Branch Offices*

##### LAX Courthouse

11701 S. La Cienega Bl. 6th Floor  
Los Angeles, CA 90045  
Phone: (310) 727-6142

##### Lancaster District Office

1028 W. Avenue J2  
Lancaster, CA 93534  
Phone: (661) 945-6446

##### Van Nuys District Office

14340 West Sylvan Street  
Van Nuys, CA 91401  
Phone: (818) 376-3777

##### Los Angeles County Treasurer and Tax Collector

225 N. Hill Street  
Los Angeles, CA 90012  
Toll-Free No.: (888) 807-2111  
Email: [info@ttc.lacounty.gov](mailto:info@ttc.lacounty.gov)

### ORANGE COUNTY

#### Orange County Clerk-Recorder (Main Office)

Hall of Records and Finance  
12 Civic Center Plaza  
Santa Ana, CA 92071  
Phone: (714) 834-2500  
[www.ocrecorder.com](http://www.ocrecorder.com)

#### Old Orange County Courthouse

211 West Santa Ana Blvd.  
Santa Ana, CA 92701

#### South County Branch Office

Laguna Hills Civic Center  
24031 El Toro Road, Suite 150  
Laguna Hills, CA 92653

#### North County Branch Office

Downtown Fullerton  
201 N. Harbor Blvd.  
Fullerton, CA 92832

#### Orange County Treasurer- Tax Collector

625 North Ross St., Building 11  
Santa Ana, CA 92701  
Phone: (714) 834-3411  
Email: [ttcinfo@ttc.ocgov.com](mailto:ttcinfo@ttc.ocgov.com)  
[www.tax.ocgov.com/](http://www.tax.ocgov.com/)

### RIVERSIDE COUNTY

#### Riverside (Gateway)

2720 and 2724 Gateway Dr.  
Riverside, CA 92507  
Assessor & County Clerk:  
(951) 486-7000  
<http://www.riversideacr.com/>

#### Riverside (Downtown) County Administrative Center

4080 Lemon St., 1st Floor  
Riverside, CA 92502  
Assessor: (951) 955-6200  
County Clerk-Recorder:  
(951) 486-7000  
<http://www.riversideacr.com/>

#### Blythe Offices of Assessor County Clerk Recorder

270 N. Broadway  
Blythe, CA 92225  
Phone: (760) 921-5050  
<http://www.riversideacr.com/>

#### Hemet County Administrative Center

880 N. State, Suite B-6  
Hemet, CA 92543  
Assessor: (951) 766-2500  
County Clerk-Recorder: (951) 486-7000  
<http://www.riversideacr.com/>

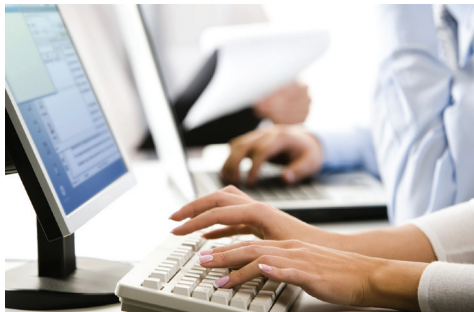


Lawyers Title

**Indio**  
**County Administrative Center**  
82675 Highway 111, Room 113  
Indio, CA 92201  
**Assessor:** (760) 863-7800  
**County Clerk-Recorder:**  
(760) 863-8732  
<http://www.riversideacr.com/>

**Temecula**  
41002 County Center Dr. #230  
Temecula, CA 92591  
**Assessor:** (951) 600-6200  
**County Clerk-Recorder:**  
(951) 486-7000  
<http://www.riversideacr.com/>

**Riverside County Office of the  
Treasurer-Tax Collector**  
Mailing address:  
Riverside County Treasurer  
P.O. Box 12005  
Riverside, CA 92502-2205  
Phone: (951) 955-3900  
Email: [ttc@co.riverside.ca.us](mailto:ttc@co.riverside.ca.us)



## **SAN BERNARDINO COUNTY**

**County of San Bernardino  
Auditor/Controller-Recorder  
Hall of Records**  
222 West Hospitality Lane  
San Bernardino, CA 92415-0022  
General Information: (909) 387-8322  
<http://www.sbcounty.gov/>

**San Bernardino County Treasurer  
Tax Collector / Public  
Administrator**  
172 West Third Street, First Floor  
San Bernardino, CA 92415-0360  
Tax Collection: (909) 387-8308  
Treasurer's Office: (909) 387-6375  
Public Administrator: (909) 387-6249  
[www.mytaxcollector.com](http://www.mytaxcollector.com)



## **SAN DIEGO COUNTY**

**San Diego Assessor (Main Office)  
County Administration Center**  
1600 Pacific Highway, Suite 103  
San Diego, CA 92101  
Phone: (619) 236-3771  
<http://arcc.co.san-diego.ca.us>

**San Diego Recorder/Clerk  
(Main Office)  
County Administration Center**  
1600 Pacific Highway, Suite 260  
San Diego, CA 92101  
Phone: (619) 238-8158

**El Cajon Branch Office**  
200 S. Magnolia Ave.  
El Cajon, CA 92020  
Phone: (619) 401-5700

**San Marcos Branch Office**  
141 E. Carmel St.  
San Marcos, CA 92078  
Phone: (760) 940-6868

**County of San Diego Treasurer/  
Tax Collector - Main Office –  
County Administration Center**  
1600 Pacific Highway - Room 162  
San Diego, CA 92101  
Phone: (877) 829-4732  
Email: [taxman@sdcounty.ca.gov](mailto:taxman@sdcounty.ca.gov)  
[www.sdtreastax.com/](http://www.sdtreastax.com/)

**Chula Vista Branch Office**  
590 Third Ave  
Chula Vista, CA 91910  
Phone: (619) 498-2293

**El Cajon Branch Office**  
200 South Magnolia Avenue  
El Cajon, CA 92020  
Phone: (619) 401-5707

**San Marcos Branch Office**  
141 East Carmel Street  
San Marcos, CA 92078  
Phone: (760) 940-2904

**Kearny Mesa Branch Office**  
9225 Clairemont Mesa Blvd  
San Diego, CA 92123  
Phone: (858) 505-6060

## **VENTURA COUNTY**

**County of Ventura  
County Clerk & Recorder  
Hall of Administration,  
Main Plaza**  
800 S. Victoria Ave.  
Ventura, CA 93009-1260  
Phone: (805) 654-2263  
<http://recorder.countyofventura.org/>

**County of Ventura  
Tax Collector**  
800 S. Victoria Ave.  
Ventura, CA 93039-1290  
Phone: (805) 654-3744  
[www.venturapropertytax.org/](http://www.venturapropertytax.org/)



**Lawyers Title**